



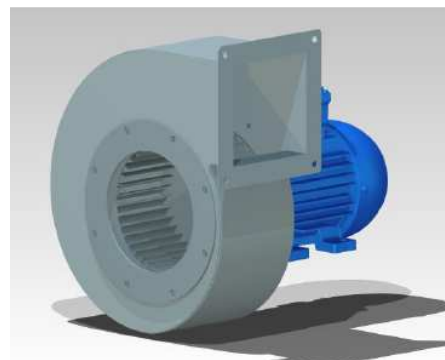
Centrifugal Fan HCAS

Protection mode:

Type of protection: EEx d IIB T4 or IIC T4
Class of temperature: T4
Protection degree: IP55
Ambient Temp : -20°C et +40°C
Zones : 1-21-2-22

Description:

Centrifugal fans **HCAS - HCAEX** low pressure, are designed to ensure the extraction of clean air and smoke. In version stainless steel, they can ensure the removal of air loaded with corrosive vapors.



Technical data:

Maximum temperature

HCAS-HCASI Temperature between -20°C and +80°C.
HCAEX-HCAEXI Temperature 400°C maximum.

Options

For $t^{\circ} > 80^{\circ}\text{C}$, high temperature paint.
Motor support omega.
Special tension and frequency.
Epoxy protection for corrosion proof and wet.
Temperature class and different gaz. (HCAS ADF- HCASI ADF).

Features

Housing :

Steel paint (HCAS-HCAEX)
Stainless steel 304 (HCASI-HCAEXI)
Standard orientation LG90°.

Impeller:

Forward curved impeller in galvanized steel (HCAS-HCAEX).
Forward curved impeller in stainless steel 304 (HCASI-HCAEXI).

Motor

Class F, IP55, 50Hz, 230/400V
Three-phase, B35. (HCAS-HCAEX)
(HCASI-HCAEXI)

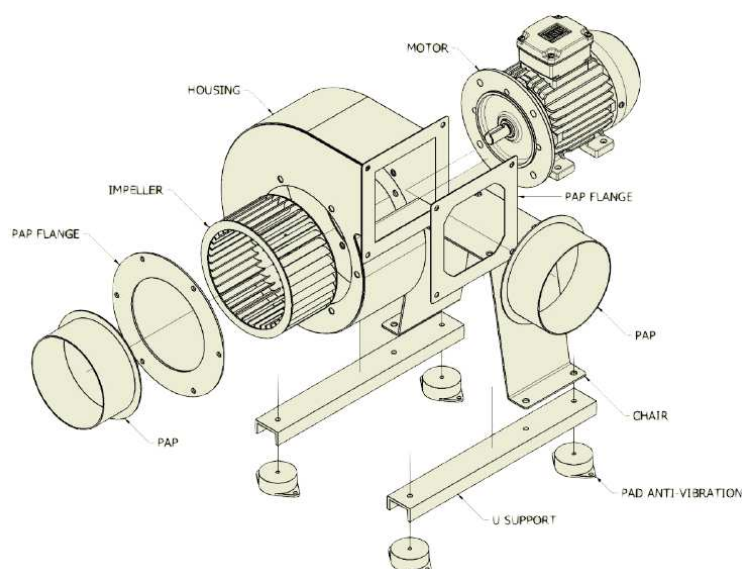
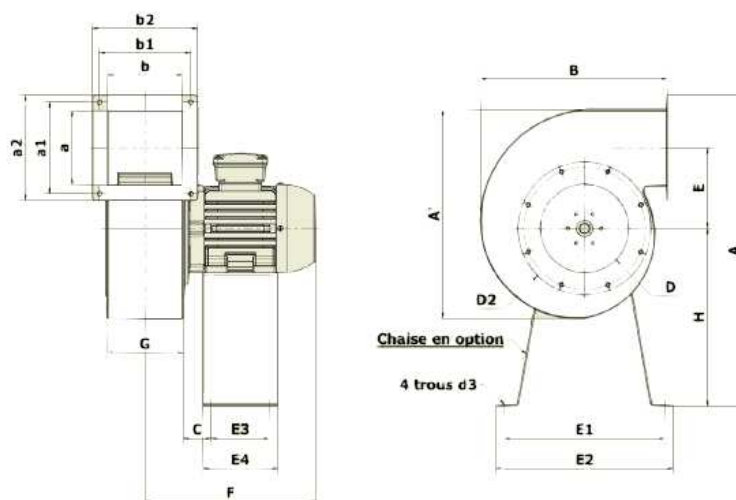
EEx d IIB T4 or IIC T4, Class F, IP55, 50Hz,
230/400V three-phase, B35. (HCAS ADF-HCASI ADF).





Centrifugal Fan HCAS

Technical drawings:



Dimensions table:

TYPE	A	A'	B	C	D	D2	E	E1	E2	E3	F	G	H	b	b1	b2	a	a1	a2	d1	d3	PAP Ø
220	400	170	184	42,5	85	130	61	220	250	75	230,5	75	230	68	95	115	63	90	110	7	8	80
320	435	205	205	42,5	112	170	62	220	250	75	240,5	95	230	88	115	135	89	115	135	7	8	125
340	435	205	205	42,5	112	170	62	220	250	75	240,5	95	230	88	115	135	89	115	135	7	8	125
420	473	243	249	42,5	114	170	92	220	250	75	240,5	95	230	88	115	135	89	115	135	7	8	125
440	473	243	249	42,5	114	170	92	220	250	75	240,5	95	230	88	115	135	89	115	135	7	8	125
520	572	301	290	42,5	135	205	115	250	280	95	253	120	271	113	140	160	113	140	160	7	8	125
540	531	301	290	42,5	135	205	115	220	250	75	278	120	230	113	140	160	113	140	160	7	8	125
620	569	298	293	42,5	135	205	115	250	280	95	281	126	271	123	150	170	113	140	160	7	8	125
620R	618	298	293	47,5	135	205	115	290	320	105	299	126	320	123	150	170	113	140	160	7	11	125
640	528	298	293	42,5	135	205	115	220	250	75	256	126	230	123	150	170	113	140	160	7	8	125
720	697	377	339	47,5	168	240	140	290	320	105	306	140	320	135	165	190	134	165	190	9	11	160
740	648	377	339	42,5	168	240	140	250	280	95	288	140	271	135	165	190	134	165	190	9	8	160
760	648	377	339	42,5	168	240	140	250	280	95	288	140	271	135	165	190	134	165	190	9	8	160
920	758	438	393	51	188	285	161	300	330	135	362,5	165	320	161	193	223	174	204	234	9	11	200
940	758	438	393	47,5	188	285	161	290	320	105	318,5	165	320	161	193	223	174	204	234	9	11	200
960	758	438	393	47,5	188	285	161	290	320	105	318,5	165	320	161	193	223	174	204	234	9	11	200
1040	832	512	465	51	224	320	190	300	330	135	382,5	205	320	202	233	263	194	224	254	9	11	250
1060	832	512	465	47,5	224	320	190	290	320	105	338,5	205	320	202	233	263	194	224	254	9	11	250



Centrifugal Fan HCAS

Models:

HCAS	kW	rd/min	LpA (dBA)	WEIGHT HCAS STEEL / STAINLESS STEEL (kg)						
				standard	II2G IIB	II2G IIC	II2GD IIB	II2GD IIC	II2D	II3D
220	0,18	3000	74	6/-	7/-	8/-	7/-	8/-	8/-	9/-
340	0,18	1500	57	7/9	8/9	9/10	8/9	9/10	9/10	10/11
320	0,18	3000	76	7/9	8/9	9/10	8/9	9/10	9/10	10/11
440	0,18	1500	58	7/9	8/9	9/10	8/9	9/10	9/10	10/11
420	0,18	3000	76	7/9	8/9	9/10	8/9	9/10	9/10	100/11
540	0,25	1500	57	10/11	11/12	12/13	11/12	12/13	12/13	13/14
520	0,37	3000	76	12/13	13/14	14/15	13/14	14/15	13/14	15/16
640	0,18	1500	58	11/13	12/13	13/14	12/13	13/14	13/14	14/15
620	0,55	3000	77	16/18	18/19	20/21	18/19	20/21	19/20	20/21
620 R	1,1	3000	78	18/-	20/-	22/-	20/-	22/-	21/-	22/-
760	0,25	1000	54	13/15	14/15	15/17	14/15	15/17	15/16	16/17
740	0,37	1500	69	14/16	15/16	17/18	15/16	17/18	16/17	1/18
720	1,1	3000	80	17/19	21/22	23/24	21/22	23/24	22/23	23/24
960	0,37	1000	64	18/20	20/21	22/23	20/21	22/23	21/22	22/23
940	0,75	1500	72	19/21	21/22	23/24	21/22	23/24	22/23	23/24
920	2,2	3000	89	26/28	29/30	32/33	29/30	32/33	30/31	31/32
1060	0,37	1000	66	21/23	23/24	25/26	23/24	25/26	24/25	25/26
1040	1,5	1500	76	25/27	28/29	31/32	28/29	31/32	29/30	30/31

Acoustic pressure level LpA measured at 1m of the inlet and outlet in a box (+/- 3dBA)

