



RPFB1. Mushroom pushbutton 1"

Protection mode:

Type of protection: II 2 GD - EEx d IIC
 Class of temperature: T6 / 85°C
 Protection degree: IP 65

Description:

The pushbutton RPFB1 is composed by a body Ø 1" ISO228 to be screwed to one entry. Complete with contacts 1NO+1NC and one red mushroom pushbutton. Pushing lock function and twist reset. Circular label, yellow background. Pushbutton to be installed on the enclosures types EJB, GUB, EFD boxes or EExd certificated enclosures.



Technical data:

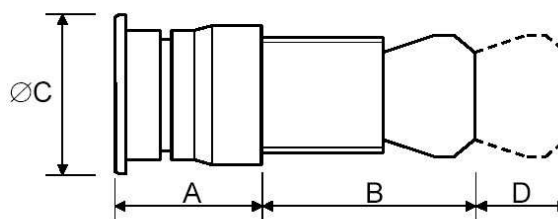
On request:

Additional contacts.
 Engraved label
 Key mushroom pushbutton (red or black)

Black mushroom pushbutton with latch twist to release.

Mushroom momentary (red or black)
 Mushroom pushbutton (*) diam. 60mm (red or black with and without latch)

Technical drawing:



Dimensions table:

Type	Contacts	Rated current (A)	Rated voltage (V)	Dimensions (mm)				Colour
				A	B	C (*)	D	
RPFB 1.11	1 NO + 1 NC	2,5 A	400 V	58	63	40	26	Red
		10 A	24 V					