



## FLX. Fluorescent Lamp

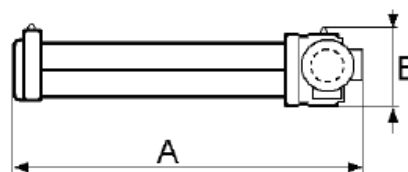
### Protection mode:

Type of protection: II 2 GD Ex d ou Ex d e IIC  
Ex tD A21  
Class of temperature: T6-T5-T4  
Protection degree: IP 65 / IP 67  
Ambient Temp : -20/ +40°C (-20/+55°C)  
Zones : 1-21-2-22



### Description:

The FLX luminaries consist of a protection tube in tempered glass directly sealed on the heads made of aluminium alloy. The luminaries are supplied with ballast and wiring. In Ex de version will be present a safety increased enclosure for power cables entry.



### Technicals data:

#### Materials:

Head : aluminium alloy.  
Protection tube : thermoresistant glass.

#### Cables entry:

N°3 Ø M20x1.5 (Ex d version)  
N2 entries Ø ½"NPT (Ex de version)

#### Inhibiting tratments:

Standard grey epoxy painting RAL 7000.

#### Weight:

11Kg

#### Application:

The luminaries are normally used for internal and external illumination where low vertical and horizontal dimensions, high luminous yield and reduced maintenance costs are required.

#### On request:

Plugs for extra holes  
External reflector  
Protection guard  
Internal lamp 18W and 36W.  
Cableglands for armored and non armored cable.  
Cables entry: Ø ½" NPT, ¾" NPT

Electronic ballast version :

Type	Fluorescent tubes				Class of Temperature (+40/+55°C)	Dimensions (mm)	
	N°	Watt	Rated Voltage (50/60Hz)	Lampholder		A	B
FLX 118 / E	1	18	100-280 V	2G11	T6 / 85°C	520	175
FLX 218 / E	2	18	100-280 V	2G11	T6 / 85°C	520	175
FLX 136 / E	1	36	100-280 V	2G11	T6 / 85°C	520	175
FLX 236 / E	2	36	100-280 V	2G11	T6 / 85°C	520	175

Electromagnetic ballast version :

Type	Fluorescent tubes				Class of Temperature		Dimensions (mm)	
	N°	Watt	Rated Voltage (50Hz)	Lampholder	+40 °C	+55 °C	A	B
FLX 118	1	18	230 V	2G11	T5 / 100°C	T4 / 135°C	520	175
FLX 218	2	18	230 V	2G11	T5 / 100°C	T4 / 135°C	520	175
FLX 136	1	36	230 V	2G11	T5 / 100°C	T4 / 135°C	520	175
FLX 236	2	36	230 V	2G11	T5 / 100°C	T4 / 135°C	520	175