



## IS EX Interrupteurs sectionneurs

### Protection mode:

Type of protection: II 2 GD - EEx d IIB  
 Class of temperature: T6-T5-T4-3  
 Protection degree: IP66  
 Zones : 1-21-2-22

### Description:

To contain automatic switches from 1 to 125A.

Possibility of several solutions with the insertion of differential relays, release coil and auxiliary contacts.



### Technical data:

**Ambient temperature:**  
 -20 +60 °C (+40°C)

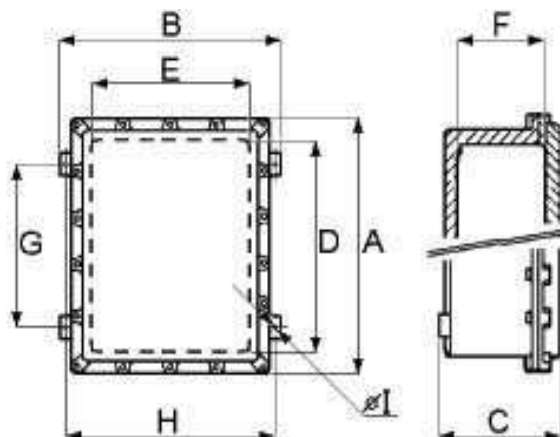
#### Materials:

Body and cover: aluminium alloy.  
 Screws: stainless steel.  
 Silicone grease IP 66.

#### On request:

Lockable handle.  
 Galvanized steel or stainless steel hinges.  
 Other epoxy painting colours different by the standards.  
 Inhibiting treatments for salt mist.

### Technical drawing:



### Dimensions table:

| Dimensions coffrets en mm : |     |     |             |     |     |               |     |     |  |
|-----------------------------|-----|-----|-------------|-----|-----|---------------|-----|-----|--|
| Extérieures                 |     |     | Intérieures |     |     | Fixation( mm) |     |     |  |
| A                           | B   | C   | D           | E   | F   | G             | H   | ø I |  |
| 375                         | 270 | 173 | 300         | 200 | 135 | 282           | 250 | 10  |  |

| Code commande: |         |         |
|----------------|---------|---------|
| IS EX          | 63 A    | 400 VAC |
| 63A            | 80 A    | 100 A   |
| 125 A          | 220 VAC | 400 VAC |