



GUB-WE

Protection mode:

Type of protection: II 2 GD EEx d IIC
EEx d [ia] IIC
Class of temperature: T6-T5-T4-T3
Protection degree: IP 65 / IP 67*

Description:

The GUB-WE enclosures are square shaped and have an extension (E) and a threaded cover with circular porthole (W).

To contain electric, electronic equipments, I.S. devices and instruments to be visualized.



Technicals data:

Ambient temperature:
-20 +60 °C (+40 / +50 °C).

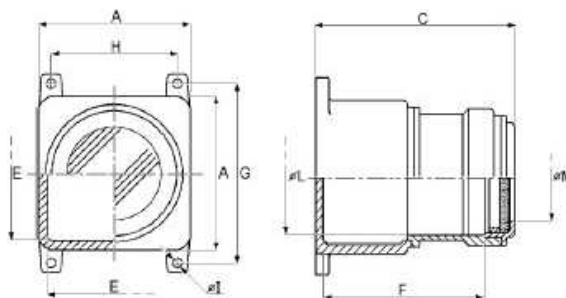
Materials:

Body and cover: aluminium alloy.
Porthole: thermoresistant tempered glass.
Screws: stainless steel.

On request:

*IP 67 protection with o-ring.
Galvanized steel equipment plate.
Breathing / draining valve.
Other epoxy painting colours.
Inhibiting treatment for salt mist.

Technical drawing:



Type	Dimensions (mm)					Glass	Fixing (mm)		
	External		Internal				øM	G	H
	A	C	E	øL	F				
GUB-WE 0	150	240	125	102	200	79	178	125	2 X 8
GUB-WE 0H	150	280	125	102	235	79	178	125	2 X 8
GUB-WE W 1	200	280	170	146	238	121	228	178	2 x 10
GUB-WE 1H	200	320	170	146	277	121	228	178	2 x 10
GUB-WE 3	250	365	225	190	318	160	285	228	4 x 10
GUB-WE B3L	360	390	325	300	330	260	395	318	4 x 10
GUB-WE 3L	360	480	325	300	420	260	395	318	4 x 10
GUB-WE 4	450	530	410	386	440	260	485	410	4 x 10
GUB-WE 4A	450	460	410	386	375	260	485	410	4 x 10