



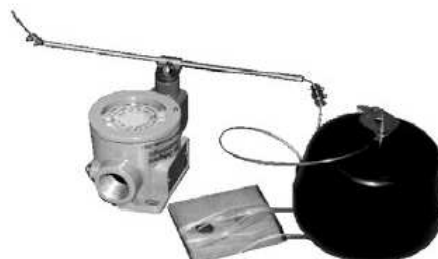
## PS.AG Float limit switch

### Protection mode:

Type of protection: II 2 GD EEx d IIC  
 Class of temperature: T6  
 Protection degree: IP 65

### Description:

The PS..AG float limit switch consists of a body with actuator and adjustable rod on the length and on the inclination. It is complete of wire, float, counter-weight and with action in two directions (with float on the right or on the left side).  
 To control level of tanks, and so on.



### Technical data :

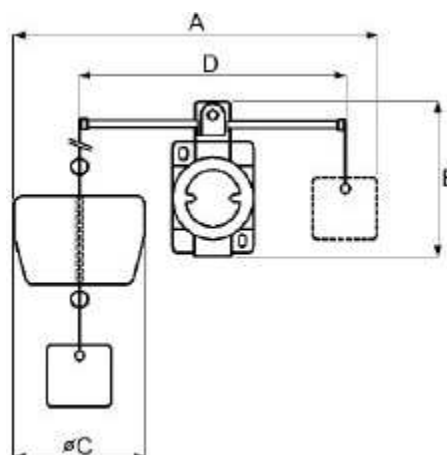
#### Materials:

Body: aluminium alloy.  
 Counter-weight: galvanized steel.  
 Float: moplen.  
 Wire: nylon.  
 Screws: stainless steel.

#### On request:

AISI 304 stainless steel counter-weight and float.

### Technical drawing :



Type	Max. Voltage	Max. Current	Contacts	Max. no. of operations	Poles	Dimensions (mm)			
						A	B	Ø C	D
PS10AG	220 Vac/dc	10 A	1 NO + 1 NC	300/h	1	290	120	100	216
PS20AG	220 Vac/dc	5 A	2 NO + 2 NC	300/h	2	290	120	100	216