



EFD2 Pushbuttons series

Protection mode:

Type of protection: EX II 2GD EEX d IIB + H2
 Class of temperature: T6
 Protection degree: IP65
 Température ambiante : -50 / +60°C*
 Zones : 1-21-2-22



Description:

Series EFD pushbuttons, made of aluminium light alloy, with external bolts in stainless steel and RAL 7000 epoxy vinyl coating, are available in accord to all different requirements because of their big choice of control and signalling units.

Technicals data:

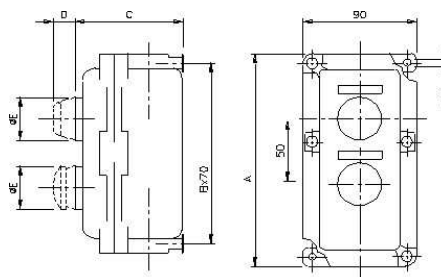
Materials	Body and cover aluminium alloy Screws in stainless steel
Inhibiting treatment	Standard epoxy painting Grey RAL7000
Electrical elements	
Rated Insulation voltage	Ui 660V (CEI 60947-5-1) 300V (CSA C22-2 n,14) lith 10A
Dielectric strenght	3KV (1s)
Insulation resistance	2 Mohm min (500VCC)
Initial contact resistance	<=25m. Ohm
Short circuits protection	Fuses gl 10A 500V 10.3 x 38 II 100KA
Terminals marking	EN 60079-0(2006), EN 60079-1(2007), EN 61241-0(2006), EN 61241-1(2004)
Connections	Self cleaning type EN01 (NC) EN10 (NO)
Operation frequency	1800 operations/hours maxi
Utilization categories	AC15 Voltage(V)-24-130-230-400 Current(A) 10-6.5-4- 2.5 DC13 Voltage (V) -24-110 Current (I) -1.5-0.5

Electrical characteristics	
Commutators	
Tension/Current	380 VAC / 10A
Lights : R (Red) B (Blue) W (White) G (Green) J (Yellow)	
Power / U max.	5W / 230V Lights type E14 or Led on request
Elements	
UIT max.	230V VDC/AC/5W
Trimmer	60 Kohms +/- 5%

*With incandescent lamps		
Gas	Dust	Tamb
T6	T85°C	-50/ +40°C
T5	T100°C	-50/ +50°C
T4	T135°C	-50/ +60°C

*Commands units only		
Gas	Dust	Tamb
T6	T85°C	-50/ +60°C

Technical drawing:



Type	Eléments	Entres câbles		Dimensions			Poids Gr
		Ø	Nbres	A	B	C	
EFD2	2	3/4"	2	156	136	87	685

Eléments	Symbole	D	E	Contacts	Poids
Buton ON	1	20	38	1NO	180
Buton OFF	0	20	38	1NC	180
Interr 2p	I2	21	45	2NO	300
Interr 2p +	D2	21	45	2NO2NC	300
Commut 3p	C2	21	12	2NO2NC	300
Inter Push Lock	8	38	38	1NO1NC	220
Lights E14	R-B-V-G-A	38	38	-	170
Interr. Key 2p	7/2	46	38	2NO	400
Interr. Key 2p+	7/2D	46	38	2NO2NC	400
Commut Key 3p	7/2C	46	38	2NO2NC	400
Trimmer *	10	22	45	60KOhms	-