



Condulets. Waterproof pulling boxes

Protection mode:

Protection degree: IP65

Description:

The waterproof boxes called CONDULETS are rectangular shaped and their cover with gasket is fixed by two screws.

The boxes CONDULETS are used for waterproof equipments to pull and join.



Technical data:

Materials:

Body and cover: aluminium alloy.

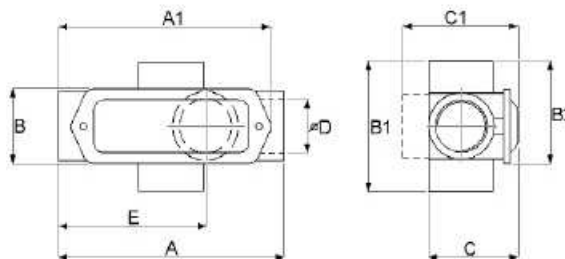
Screws: galvanized steel.

Gasket: rubber.

On request:

Other types of thread.

Technical drawing:



Ø Entries	Type							
	2 entries	2 entries	2 entries	2 entries	2 entries	3 entries	3 entries	4 entries
1/2"	C 17	LB 17	LU 17	LL 17	LR 17	T 17	TB 17	X 17
3/4"	C 27	LB 27	LU 27	LL 27	LR 27	T 27	TB 27	X 27
1"	C 37	LB 37	LU 37	LL 37	LR 37	T 37	TB 37	X 37
1.1/4"	C 47	LB 47	LU 47	LL 47	LR 47	T 47	TB 47	X 47
1.1/2"	C 57	LB 57	LU 57	LL 57	LR 57	T 57	TB 57	X 57
2"	C 67	LB 67	LU 67	LL 67	LR 67	T 67	TB 67	X 67
2.1/2"	C 77	LB 77	LU 77	LL 77	LR 77	T 77	TB 77	X 77
3"	C 87	LB 87	LU 87	LL 87	LR 87	T 87	TB 87	X 87
4"	C 107	LB 107	LU 107	LL 107	LR 107	T 107	TB 107	X 107

Entries Ø D	Dimensions (mm)							
	A	A1	B	B1	B2	C	C1	E
1/2"	123	113	40	68	54	49	66	89
3/4"	123	113	40	68	54	49	66	89
1"	152	138	46	81	64	59	79	106
1.1/4"	171	163	62	96	76	71	91	123
1.1/2"	171	163	62	96	76	71	91	123
2"	204	191	76	118	97	85	108	144
2.1/2"	258	238	108	165	137	123	152	175
3"	258	238	108	165	137	123	152	175
4"	314	300	134	196	165	153	187	216