



## Enclosures for gas and dust zones

### Mode de protection:

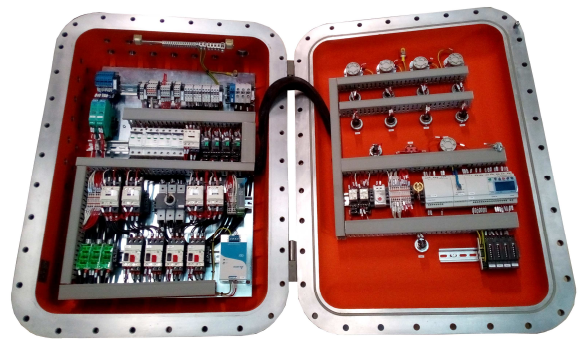
EX II 2GD  
Ex d IIB or IIB+H2 T6 or T5 or T4 or T3 Gb  
Ex tb IIIC T85°C or T100°C or T135°C or T200°C Db  
IP66

EX II 2(1)GD  
Ex d [ia IIC ou IIB Ga] IIB or IIB+H2 T6 or T5 or T4  
or T3 Gb  
Ex tb [ia Da] IIIC T85°C or T100°C or T135°C or  
T200°C Db IP66

Protection degree: IP66  
Ambient temperature : -20 / +40°C

(-40/-50/+50/+60°C possible on  
request)  
T° Cable : 80°C or 95°C or 130°C or 175°C

Certificats : INERIS 15 ATEX0010X  
IECEX INE 15.0011X



Coffrets montés câblés permettant l'intégration de produits électroniques en zone explosibles.  
Applications intégration de régulateurs, indicateurs, électronique de pesage, sécurité  
intrinsèques, bus terrain, autant d'applications que possible...

### Front face components :

Pushbuttons  
Led lamps  
Switch  
Emergency mushroom  
Rotary handle  
Windows with tempered glass

### Mounting

Wiring following your specifications, electrical  
drawings, with or without furniture of your  
internal components.  
Quotation regarding your technical  
requirements.  
Wiring on our installations or to your local  
installator

