



## CSA/AM Aluminium enclosure

### Protection mode:

Type of protection: II 2 GD EEx e II / EEx ed IIC  
 Class of temperature: T6-T5  
 Protection degree: IP 65  
 Certificate: INERIS 02 ATEX 0082

### Description:

The CSA/AM enclosures are square or rectangular shaped and have the cover with gasket which is connected to the body of the enclosure by screws.  
 Wall thickness = 7mm  
 To contain and/or visualize modular EEx-e terminals and components.



### Technical data:

**Ambient Temperature:**  
 -20/+40 °C (-40 / +60 °C)

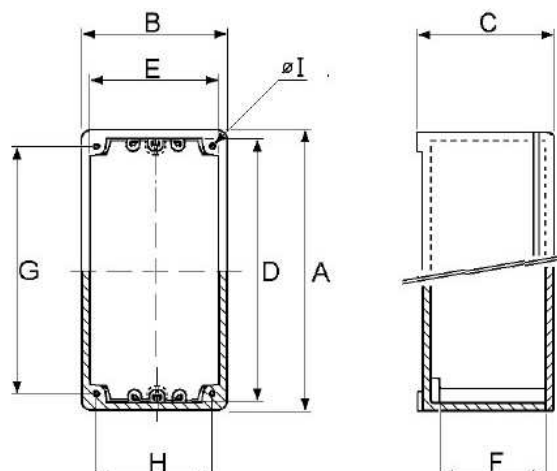
#### Materials:

Body and cover: aluminium alloy.  
 Gasket: neoprene.  
 Screws: stainless steel.

#### On request:

Rail, Equipment plate, Terminals.  
 Components.  
 Breathing / draining valve.  
 Window for instrument visualization.  
 Inhibiting treatments for salt mist.  
 Version for Intrinsic Safety circuits blue RAL 5012.

### Technical drawing:



| Type      | Dimensions (mm) |     |     |          |     |     | Fixing (mm) |     |     |
|-----------|-----------------|-----|-----|----------|-----|-----|-------------|-----|-----|
|           | External        |     |     | Internal |     |     |             |     |     |
|           | A               | B   | C   | D        | E   | F   | G           | H   | Ø I |
| CSA/AM 1A | 110             | 110 | 85  | 100      | 100 | 62  | 94          | 94  | 8   |
| CSA/AM 1B | 147             | 147 | 100 | 137      | 137 | 78  | 131         | 131 | 8   |
| CSA/AM 1C | 170             | 110 | 85  | 160      | 100 | 62  | 154         | 94  | 8   |
| CSA/AM 2A | 260             | 128 | 174 | 246      | 114 | 154 | 210         | 108 | M6  |
| CSA/AM 2B | 260             | 260 | 174 | 246      | 246 | 154 | 240         | 210 | M6  |
| CSA/AM 3A | 305             | 147 | 100 | 295      | 137 | 78  | 285         | 127 | 10  |
| CSA/AM 3B | 305             | 230 | 100 | 295      | 220 | 78  | 285         | 210 | 10  |
| CSA/AM 3C | 305             | 230 | 180 | 295      | 220 | 153 | 285         | 210 | 10  |
| CSA/AM 3D | 326             | 260 | 174 | 312      | 246 | 154 | 306         | 210 | M6  |
| CSA/AM 3E | 393             | 260 | 174 | 379      | 246 | 154 | 373         | 210 | M6  |
| CSA/AM 4  | 470             | 305 | 180 | 460      | 295 | 153 | 450         | 285 | 10  |
| CSA/AM 5  | 530             | 480 | 210 | 451      | 451 | 143 | 500         | 430 | M12 |
| CSA/AM 6  | 620             | 305 | 180 | 610      | 295 | 153 | 600         | 285 | 10  |