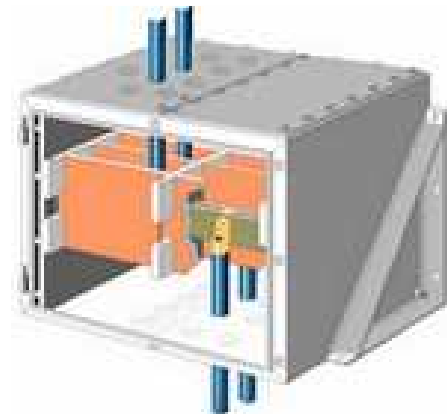




BUS BAR Serie

Protection mode:

Type of protection: II 2G EEx e II
 Class of temperature: T6 or T5
 Protection degree: IP66/67*



Description:

The Bus-Bar box is used for the connection of cables or equipment where the conductor size and number of cables being connected would make it very difficult in any other High Voltage range.

Max cable size 1000mm² 11KV 3000A

Technical data:

Heavy duty construction, padlock facility and an internal/external earth stud fitted as standard. Additionally, the Bus-Bar box incorporates heavy duty mounting facilities which can be adapted to suit the customer's requirements.

The Bus-Bar box is ATEX certified using the latest standards and is suitable for operation in a Category 2/Zone 1 area and a Category 3/Zone 2 area.

Amb. Temp:

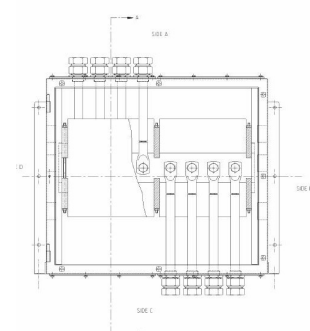
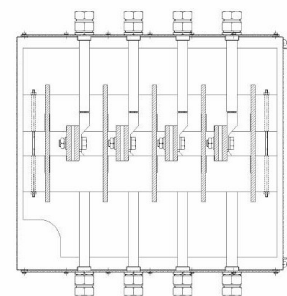
-20° to +40°C (-4°F to +176°F)
 -50° to +65°C (-58° to +149°F) on request

Materials:

Mild steel and stainless steel

*on request

Technical drawing:



Dimensions table:

| Part Number | Maximum Width (mm) | Maximum Height (mm) | Maximum Depth (mm) | Maximum Current (A) | Maximum Voltage (kV) | Maximum Way | Maximum Conductors per Way | Maximum Way | Max. Conductor Size (mm ²) |
|-------------|--------------------|---------------------|--------------------|---------------------|----------------------|-------------|----------------------------|-------------|--|
| Bus-Bar Box | 770 | 770 | 1250 | 3000 | 11 | 4 | 6 | 4 | 1000 |